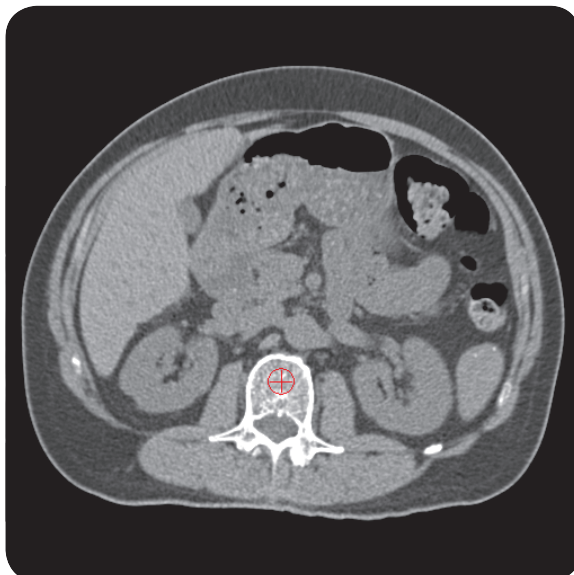


NEW



CliniQCT™

Bone densitometry for osteoporosis screening.

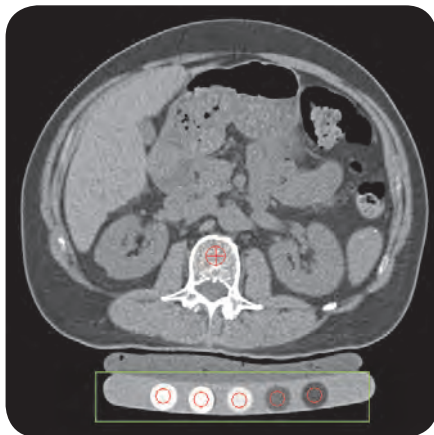
- Non-inferior to QCT with a phantom
- Incidental BMD
- Dual-use of CT scans—No-dose BMD
- Prospective and Retrospective BMD
- Volumetric trabecular spine BMD
- DXA-equivalent hip BMD
- Faster, simpler than BMD with a phantom
- More cost-effective than DXA

MINDWAYS
quantifiably better.



CliniQCT

No patient phantom spine and hip bone densitometry.



Conventional QCT requires a calibration phantom under the patient during the CT scan.



CliniQCT does not require a phantom.

"Any Abdominal CT images which include the lumbar spine can be used to identify patients with osteoporosis without additional radiation exposure or cost."

Expand the capabilities of QCT Pro™ with ClinIQCT.

CliniQCT is the next generation of QCT : Asynchronous calibration allows patients to be scanned without a phantom. Instead, calibration data is derived from dedicated monthly phantom scans. ClinIQCT simplifies work-flow, and facilitates incidental, dual-use and retrospective BMD measurement from CT scans.

Incidental screening with no additional radiation dose.

CliniQCT allows a spine and/or hip BMD measurements to be extracted from non-IV contrast CT scans done for other indications..., including abdomen/pelvis/spine CT, CT colonography, CT urography, LDCT, cancer related PET CT, among others. More than 24 million such CT scans are done annually in the U.S. and most of these are on at-risk patient populations. This presents an opportunity to greatly increase osteoporosis screening with no additional radiation dose to the patient.

Retrospective QCT.

Mine PACS archives to obtain BMD estimates on CT scans done days, weeks or years ago. Discover associations between BMD and clinical outcomes. Identify patients with previously unappreciated low bone mass that might benefit from a follow-up BMD study.

Simplifying work-flow and maximizing use of existing information are key elements of programs to provide the best medical care in a cost-efficient manner.

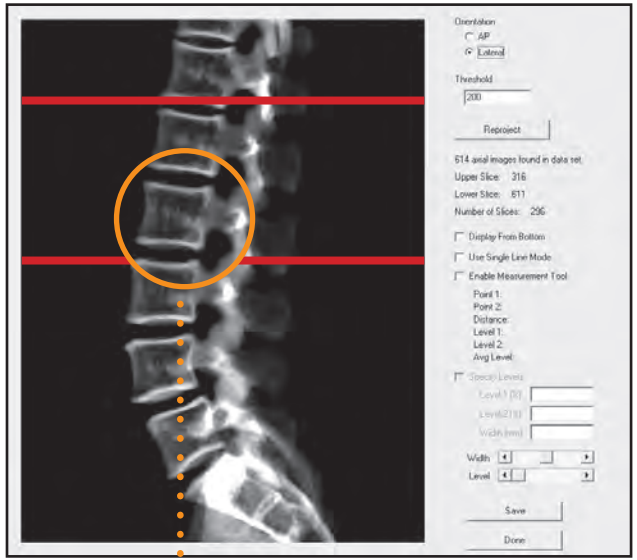
CliniQCT is a cornerstone of a cost-effective bone-health program whether it is used for standalone screening, for identifying patients, including men, that might benefit from specialty services, or as a tool for researchers interested in understanding associations between BMD and clinical outcomes.

Any QCT Pro system can be easily upgraded to ClinIQCT.



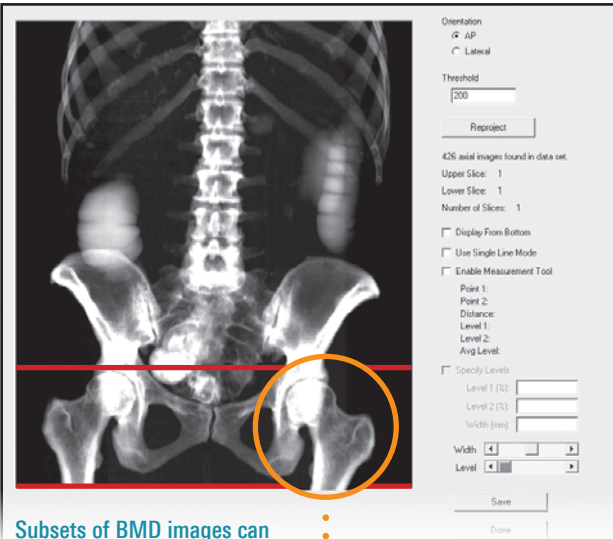
Incidental QCT

Extract no-dose spine and/or hip BMD measurements from CT scans done for other indications.



Dual-use QCT

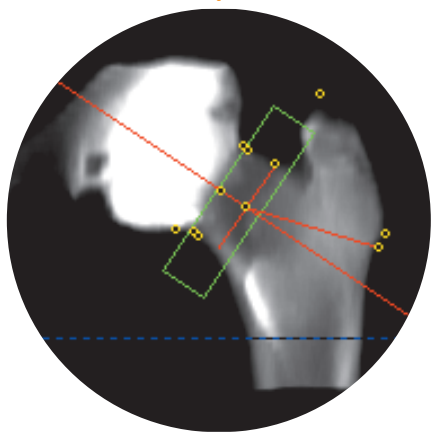
Obtain BMD measurements in combination with other CT studies done in known at-risk patient populations.



Subsets of BMD images can be extracted from the full CT data set using the QCT Pro SlicePick™ extraction utility.



Volumetric spine trabecular BMD extracted from an L-spine CT.



DXA-equivalent hip BMD extracted from a CT colonography.



MINDWAYS
quantifiably better.

REDUCE (TIME) | REUSE (SCANS) | REMOVE (DOSE)

U.S. Office

Mindways Software, Inc.
3001 S Lamar Blvd.
Suite 302
Austin, TX 78704 USA

Telephone & Fax

Toll-free: 877-MINDWAYS
Office: +1 512 912 0871
Fax: +1 512 912 0872

European Office

Am Germaniahafen 1
24143 Kiel, Germany

Telephone

+49 (0) 172 30 44 26 7

General Inquiries

info@qct.com

Support Inquiries

support@qct.com



CE 0499

www.qct.com

CliniQCT refers to the optional QCT Pro Asynchronous Calibration Module that provides additional calibration functionality to the Mindways QCT Pro Bone Mineral Densitometry System.